

Red Light Pod

BEST-SELLING RED LIGHT THERAPY BED

Red Light Pod is our innovative and market-leading red light bed that uses both **red** and **near-infrared light** to treat the entire body with over 28,000 LED lights. The device is simple to use, requires no staffing, and has almost no operating costs.

30 000 EUR

from **565 EUR/ month**

Prices are ex. VAT

What is included in a purchase?

- Shipping, installation & training
- Complete marketing package
- 3 years warranty

Functions

- Customizable wavelengths
- Both red light (633-660 nm) & NIR (850-940 nm)
- LCD touch screen with timer
- 4 plasma cooling fans
- Bluetooth sound system
- Low power consumption (2.7 kW)



Why Red Light Therapy?



Slows down skin aging and increases collagen production.



Natural pain-relief




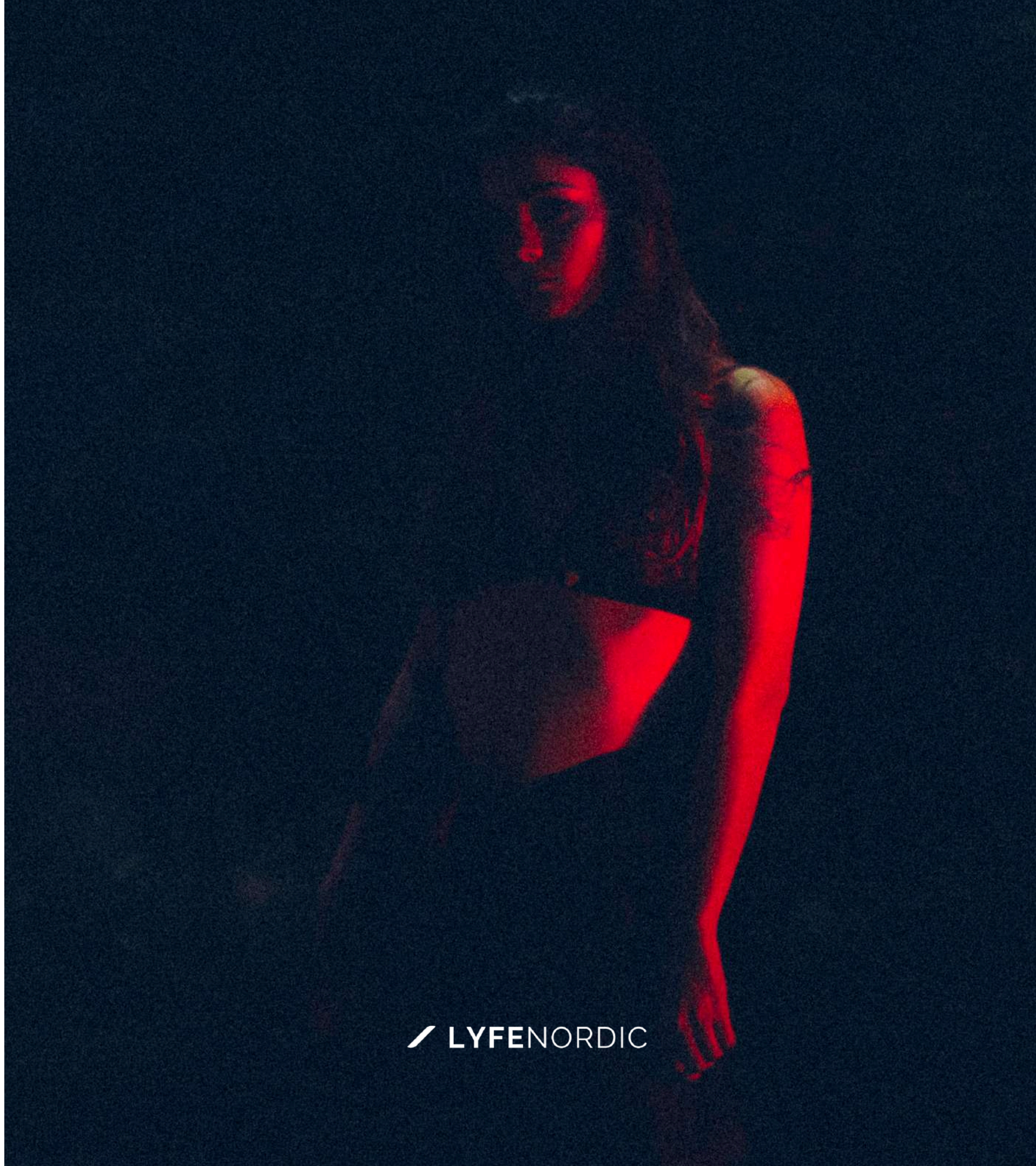
Reduces inflammation



Increases mental & physical performance

Read more about all the benefits at lyfenordic.com

 LYFENORDIC



What do our customers' customers say?



LYFENORDIC

"Wonderful **effective boost** with 15 minutes in the red light booth!" - Johanna

★★★★★

"Red light therapy was a great experience, I noticed an effect in my body after just one treatment! **Reduced muscle soreness and felt more energized** :) - Sophie R."

★★★★★

"**Always just as relaxed when I go out**, it's a new person when you step over the threshold." - Magnus H.

★★★★★

"First time I tried red light therapy and it was absolutely fantastic! After that, **it felt like I had recharged my energy**. Definitely going to do it more times! :)" - Helena M.

★★★★★

Return Of Investment

3 customers per day: 11.2 months

Daily profit: 125 EUR

Annual profit: 33 000 EUR

ROI (days): 335

5 customers per day: 6.5 months

Daily profit: 215 EUR

Annual profit: 56 700 EUR

ROI (days): 195

10 customers per day: 3 months

Daily profit: 440 EUR

Annual profit: 116 160 EUR

ROI (days): 95

Calculation basis

Treatment price (15 min): 45 EUR

Variable costs/hour: 1 EUR

Operating time per day (h): 10

Days per week: 6

Months per year: 11

Technical Specifications

RED LIGHT POD

Dimensions	192L x 88B x 95H (cm)
Electricity	220-240V 16A, 2851 W
No. of LED-lights	28 512
Irradiance	40-60 mw/cm ²
Unit weight	90 kg
Requirements	Dedicated power supply with grounded plug
Wavelengths	Red Light: 633 & 660 nm. NIR: 850 & 940 nm
Warranty	3 years

Frequently Asked Questions and Answers

Can the wavelengths of the lights be adjusted in your machines?

Yes, that can be done. All our models can be customized according to the wavelengths requested by the customer.

Is the Red Light Pod certified?

Yes, the technologies are CE-marked, ISO-certified, and FDA-registered.

How long is the delivery time?

The delivery time is usually 2-3 months. If we have the unit in stock, delivery occurs within 1-2 weeks.

What is included in a purchase?

When making a purchase, shipping, installation, training, and a complete marketing package are always included.

What is the difference compared to an infrared sauna?

Red light therapy uses specific wavelengths of red and near-infrared light, while IR sauna only uses infrared heat. Read more at lyfenordic.com.

How many treatments are needed to see results?

Results can be noticed after just a few sessions, but for long-lasting effects, it is often recommended to undergo multiple treatments over several weeks.